



We put gas springs  
in movement

# Accessories

Easy Release Modular System

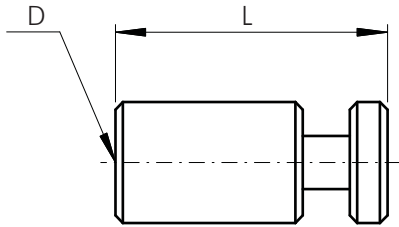
**ERMS**



Felix-Wankel-Strasse 8-10  
D - 74915 Waibstadt  
Germany

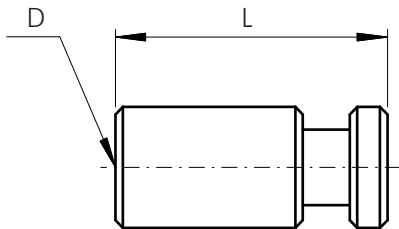
E-mail  
Internet  
Phone  
Fax

info@awp-gmbh.com  
www.awp-gmbh.com  
+49 (0) 7263 40971-0  
+49 (0) 7263 40971-29



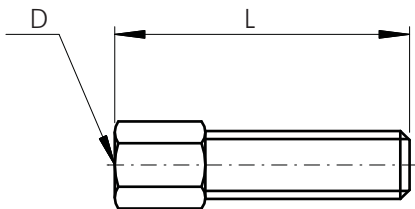
## Plastic Coupling for ULA\*

D	L	Order-No.
Ø 3,6	20	KUHU-ULA-36
M5	20	KUHU-ULA-M5
Ø 4,9	20	KUHU-ULA-49



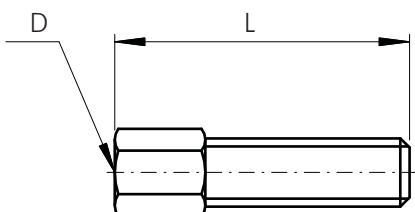
## Plastic Coupling for LA\*\*

D	L	Order-No.
Ø 4,8	20	KUHU-LA-48
M6	20	KUHU-LA-M6
Ø 3,6	20	KUHU-LA-36



## Adjustable Screw M5

D	L	Order-No.
Ø 3,6	24	STELL-ULA-36



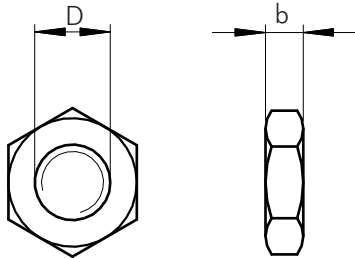
## Adjustable Screw M6

D	L	Order-No.
Ø 4,8	24	STELL-LA-48

dimensions in mm / we reserve the right to make modifications

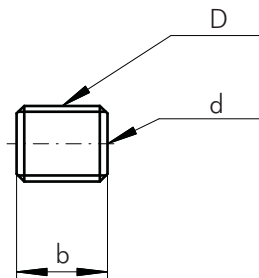
\* Ultra-Light Release Head

\*\* Light Release Head



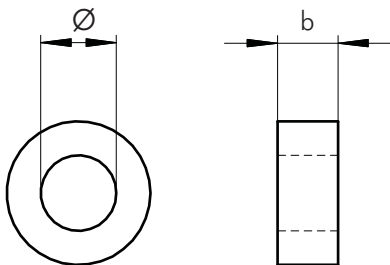
## Screw Nuts

thread D	b	order-no.
M8x1	5	MU-08
M10x1	6	MU-10



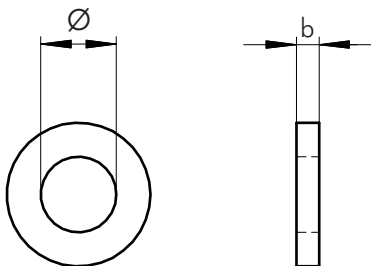
## Reduce Socket

thread D/d	b	order-no.
M10x1 / M8x1	12	RED-M10M8



## Rubber Bumper

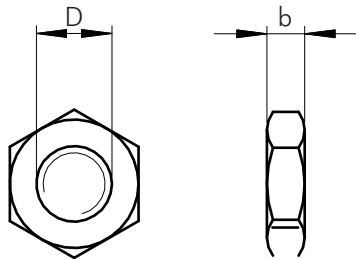
Ø	b	order-no.
8	8	GUPU-88
10	4	GUPU-104
	8	GUPU-108



## Washer

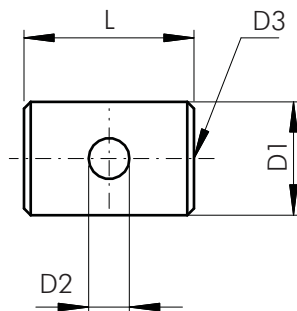
Ø	b	order-no.
8	3	SCHEI-83
10	3	SCHEI-103

dimensions in mm / we reserve the right to make modifications



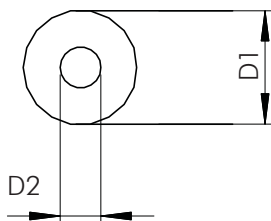
## Screw Nut for adjustable Screw

thread D	b	order-no.
M5	2,7	MU-05
M6	3,2	MU-05



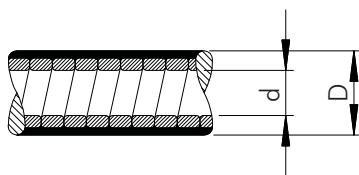
## Screw Nipple

D1	D2	D3	L	order-no.
5	1,8	M3,5	7,5	S-NIP-5-75



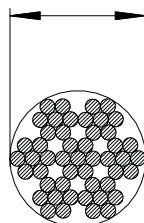
## Ball Press Nipple

D1	D2	order-no.
5	1,2	K-PN-5-1,2



## Flat Section Casing

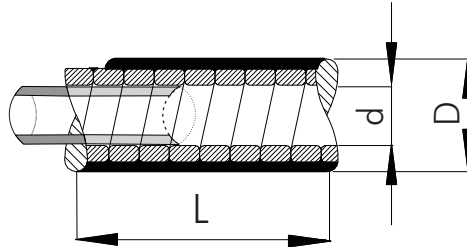
D	d	order no.
Ø 3,6	Ø 1,5	BO-HUE-3615
Ø 3,8	Ø 2,0	BO-HUE-3820
Ø 4,7	Ø 2,7	BO-HUE-4727



## Wire

Ø	material	order no.
0,7	nirosta	SEIL-07
0,9	nirosta	SEIL-09
1,0	steel galvanized	SEIL-10

dimensions in mm / we reserve the right to make modifications

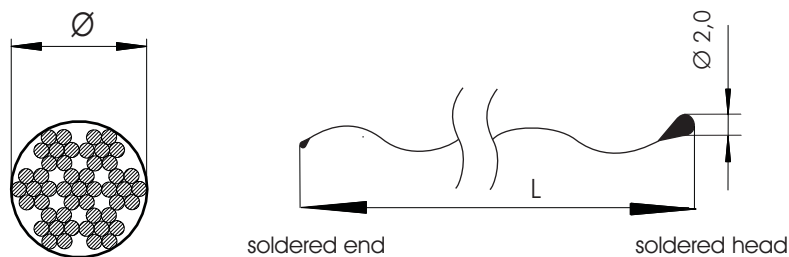


## Flat Section Casing

D	d	description	order-no.
3,6	1,5	<b>Flat section casing with POM inner tube</b>  <b>standard lengths (L):</b>  250 500 750 1000 1250 1500	BO-HUE-3615-0250 BO-HUE-3615-0500 BO-HUE-3615-0750 BO-HUE-3615-1000 BO-HUE-3615-1250 BO-HUE-3615-1500
3,6	1,5	<b>yard goods (without POM inner tube)</b>	<b>BO-HUE-3615</b>
3,8	2,0	yard goods (without POM inner tube)	BO-HUE-3820
4,7	2,7	yard goods (without POM inner tube)	BO-HUE-4727
		flat section casing with POM inner tube length as requested	BO-HUE-4727-POM + length of flat section casing

dimensions in mm / we reserve the right to make modifications

# ACCESSORIES BOWDEN WIRE

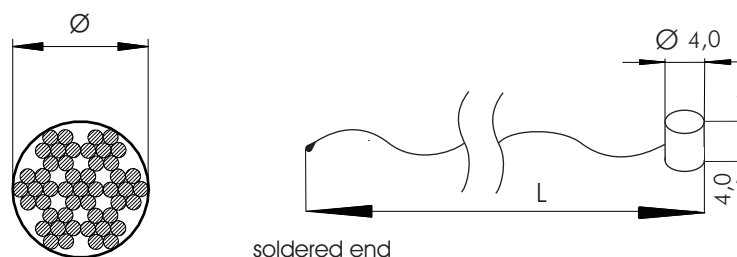


## Wire

Ø	material	description	order-no.
0,9	nirosta (7 x 7)	yard goods	SEIL-09
		standard lengths (L):	
		320	SEIL-09-0250
		570	SEIL-09-0500
		820	SEIL-09-0750
		1070	SEIL-09-1000
		1320	SEIL-09-1250
		1570	SEIL-09-1500
		2070	SEIL-09-2000

dimensions in mm / we reserve the right to make modifications

# ACCESSORIES BOWDEN WIRE

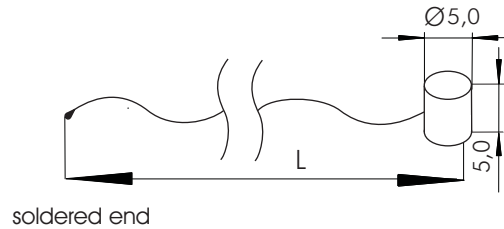
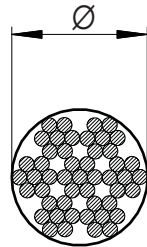


## Wire

Ø	material	description	order-no.
0,7	Nirosta (7 x 7) press nipple Ø 4 x 4	wire with press nipple standard lengths (L):  320 570 820 1070 1320 1570	SEIL-07-0250 SEIL-07-0500 SEIL-07-0750 SEIL-07-1000 SEIL-07-1250 SEIL-07-1500

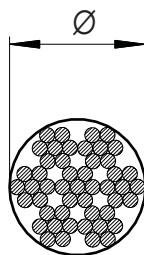
dimensions in mm / we reserve the right to make modifications

# ACCESSORIES BOWDEN WIRE



## Wire

Ø	material	description	order-no.
0,9	nirosta (7 x 7) press nipple Ø 5 x 5	wire with press nipple standard lengths (L):	
		320	SEIL-09-PN-0250
		570	SEIL-09-PN-0500
		820	SEIL-09-PN-0750
		1070	SEIL-09-PN-1000
		1320	SEIL-09-PN-1250
		1570	SEIL-09-PN-1500



## Wire

Ø	material	description	order-no.
1,0	steel galvanized	yard goods	SEIL-10

dimensions in mm / we reserve the right to make modifications